

# The RAIL BEVEL

By: Brigitte Rocklein

CSCI 140

# Usefulness of Rail Bevel

- Great for creating stylish edges
  - Think of table tops or window sills
- Adds detail to an object
- Really easy to use!
  
- Okay, let's get started!

# Step 1

- Open Modeler and select Create --> Objects --> Box.
  - Hot Key: Shift "x"
- In layer one, create a rectangle with your preferred width and depth by using the Numeric function.
  - Hot Key: "n"

# Step 1

- Make sure the height is set to zero.

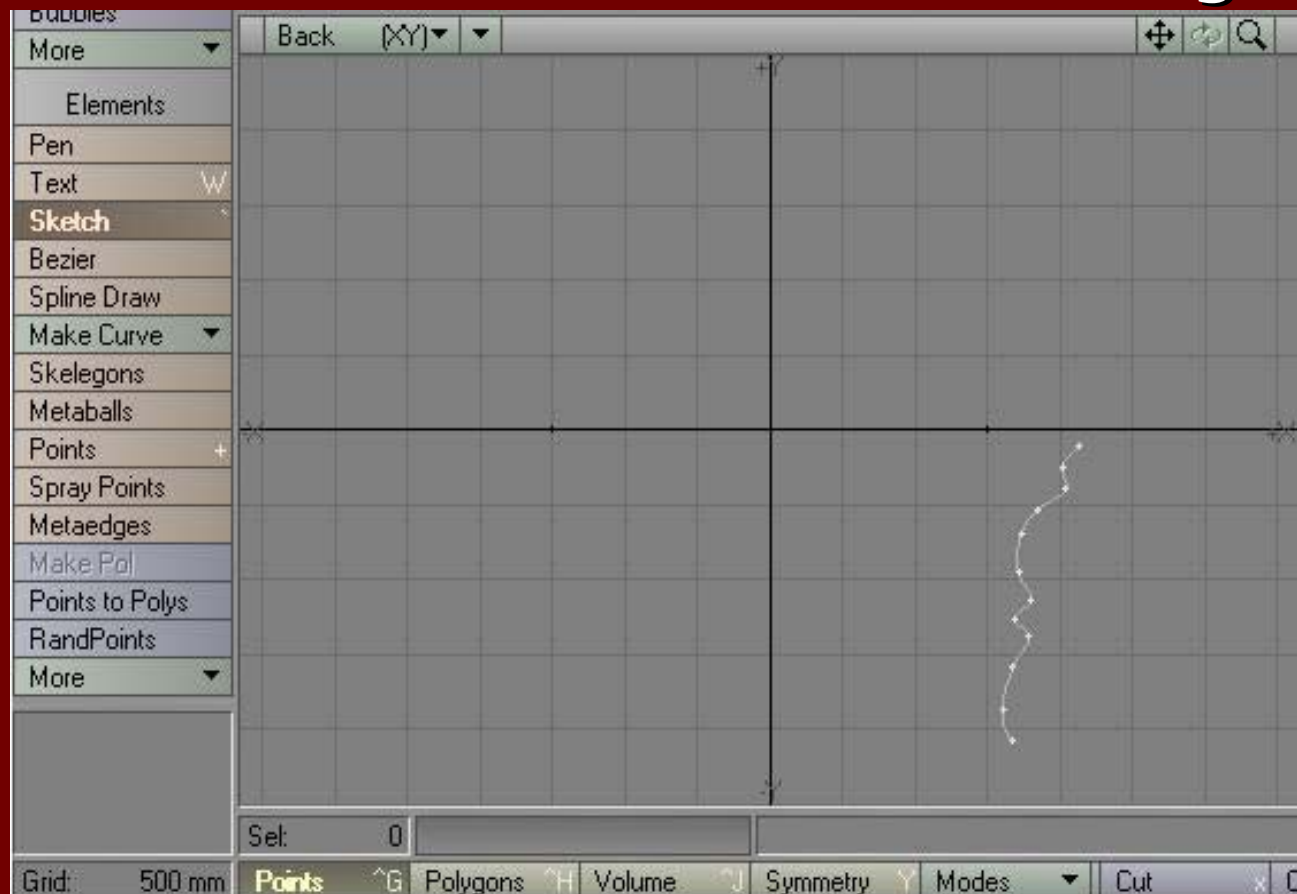


# Step 2

- Go to a second layer. In this layer we will create the shape of the edge.
- Select Create --> Elements --> Sketch
  - Hot Key: "`" ...on the tilde button
- Your tool will now look like a wand.

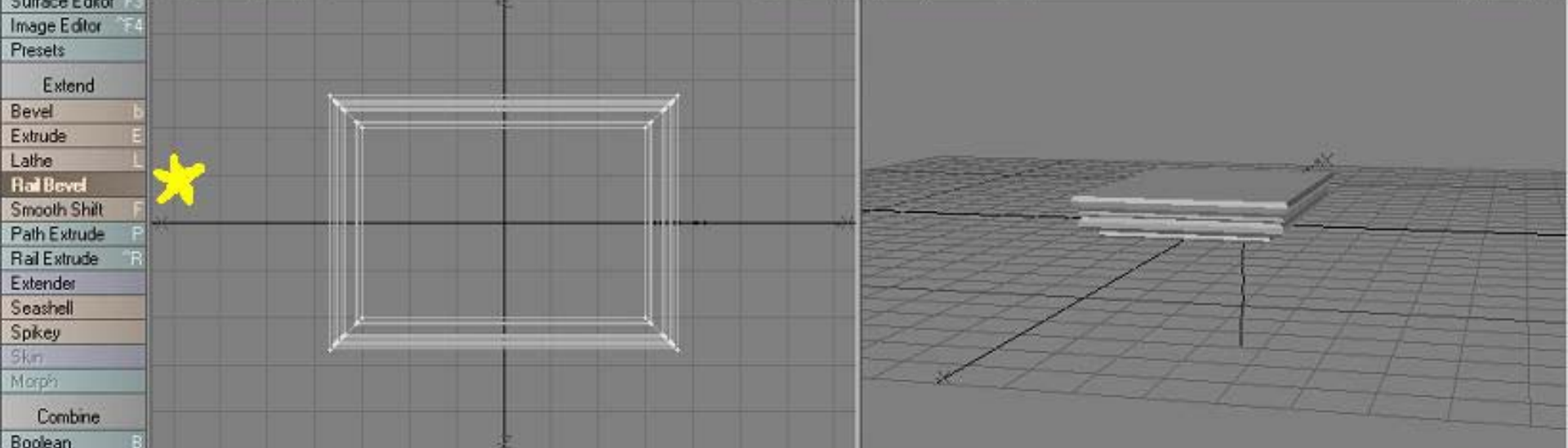
# Step 2

- In the Back view, draw a curvy or angular line. Draw this in the bottom right quadrant.



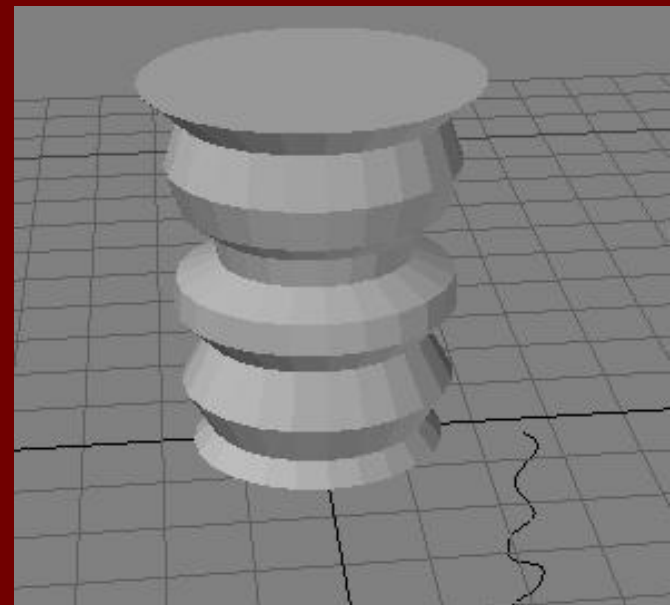
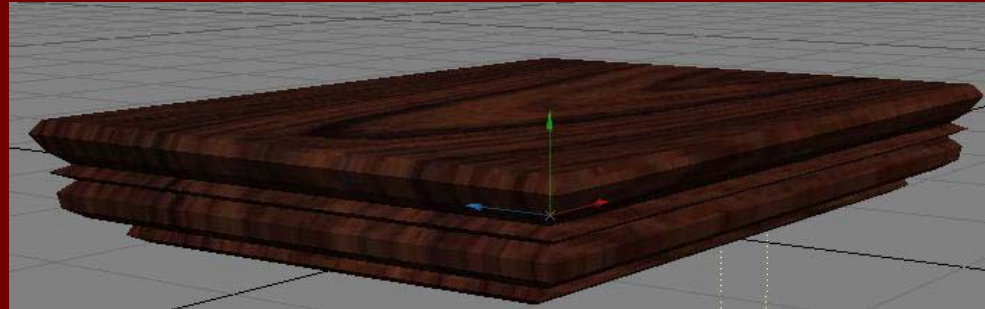
# Step 3

- Next, put your rectangle in the foreground and your sketch in the background.
- Select Multiply --> Extend --> Rail Bevel.
  - Hot Key: none
- With your cursor in the Back View, hold down the left mouse button and drag the mouse around.
- Moving Up or Down will cause the shape to become fatter or narrower. Moving Left or Right will increase or decrease the height. (yes it does seem counter-intuitive)



# Final Product

- Fool around with the mouse until you have a desired edge.
- Experiment with the line of your sketch.
- Try doing the same thing with a disk plane for a cylindrical object.



# What We Have Learned

- The Rail Bevel tool is easy because there are few steps.
- The Rail Bevel tool can be used in a number of different objects.
- We've learned hot keys!
  - Box: shift "x"
  - Numeric: "n"
  - Sketch: "`"

**Any Questions???**

Thank You for Your Time.