

# Neon Light

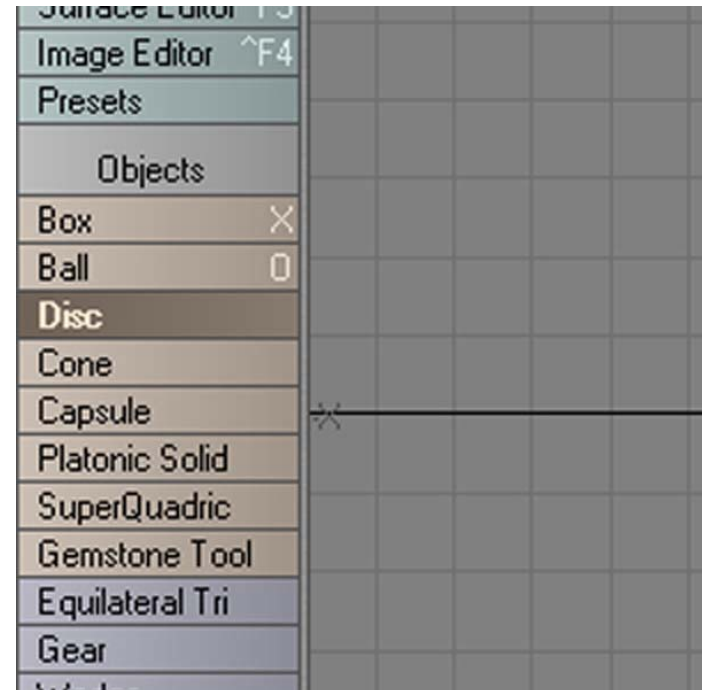
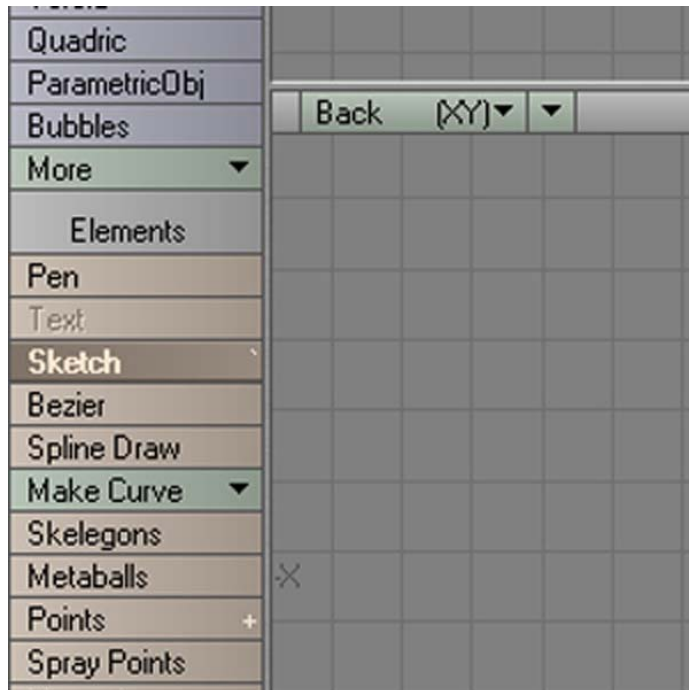
Jon Fischer

# We will be covering:

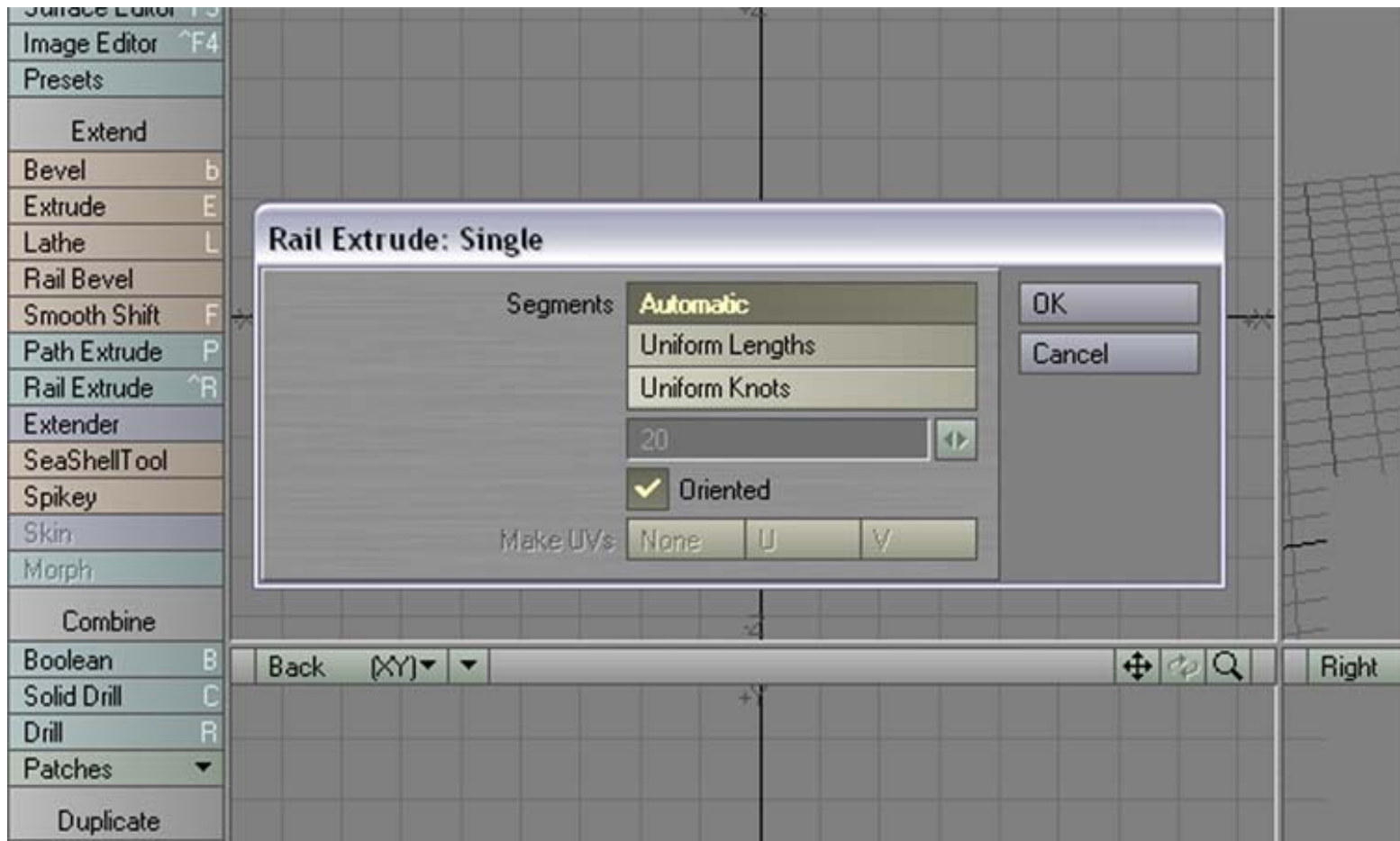
- How to make the neon tubing.
- How to add the glow effect.
- How to create the neon effect.

# Neon Tubing

- First you use the sketch tool to draw in the shape of the neon, and then make a disk at the beginning of you sketch.



- Use the rail extrude to create the neon tubing.



# The Glow Effect

- Go to surface editor and under the advanced tab set the glow intensity to 100%.
- Then go to the effect tabs and under the processing tabs turn on enable glow and set the intensity to 200% and glow radius to 16 pixels.

# The Neon Effect

- Lastly add point lights along the edge of your neon sign to give it a nice glowing look.

## Render Status

Frame Range: 0 to 0

Frame: 0

Segment: 2/2

Pass: 1/1

Frame completed

Last Frame Rendered: 0

Resolution: 640 × 480

Antialiasing: Off

Radiosity: Off

Caustics: Off

Rendering Time: 3.3 seconds

Motion Blur: Off

Field Rendering: Off

Stereoscopic Rendering: Off

Depth of Field: Off

Output Files: (none)

Abort

Esc

Continue

Enter



Peter

## Render Status

Frame Range: 0 to 0

Frame: 0

Segment: 2/2

Pass: 1/1

Frame completed

Last Frame Rendered: 0

Resolution: 640 × 480

Antialiasing: Off

Radiosity: Off

Caustics: Off

Rendering Time: 4.5 seconds

Motion Blur: Off

Field Rendering: Off

Stereoscopic Rendering: Off

Depth of Field: Off

Output Files: (none)

Abort

Esc

Continue

Enter



# We learned:

- How to make the neon tubing.
- How to add the glow effect.
- How to create the neon effect.

You mean I left a Swedish girly girl  
and her paralyzed but trusting cousin  
for this!

