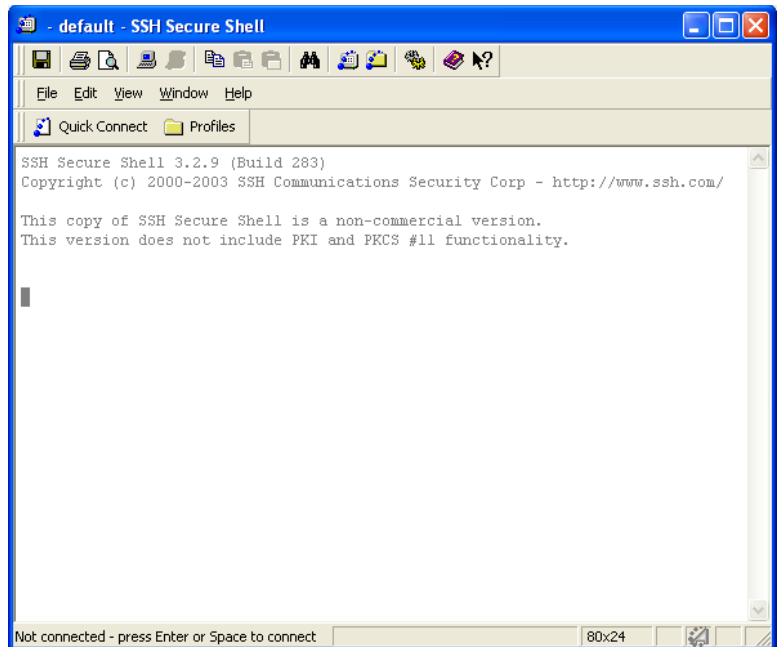


**CSCI 111: Programming and Algorithms I**  
**EECE 135: Algorithms and Programs for Engineers**

**Programming Assignment Turn-In Instructions**

**NOTE:** This document assumes that you have an account on ect-unix.ecst.csuchico.edu, the College of ECC Unix server. The examples assume that your user name on the Unix server is *user*, and that you have a telnet and ftp client setup on a computer you have access to. The figures are based on *SSH Tectia™ Client*, a telnet/ftp client freely distributed by SSH Communications Security ([www.ssh.org](http://www.ssh.org)).

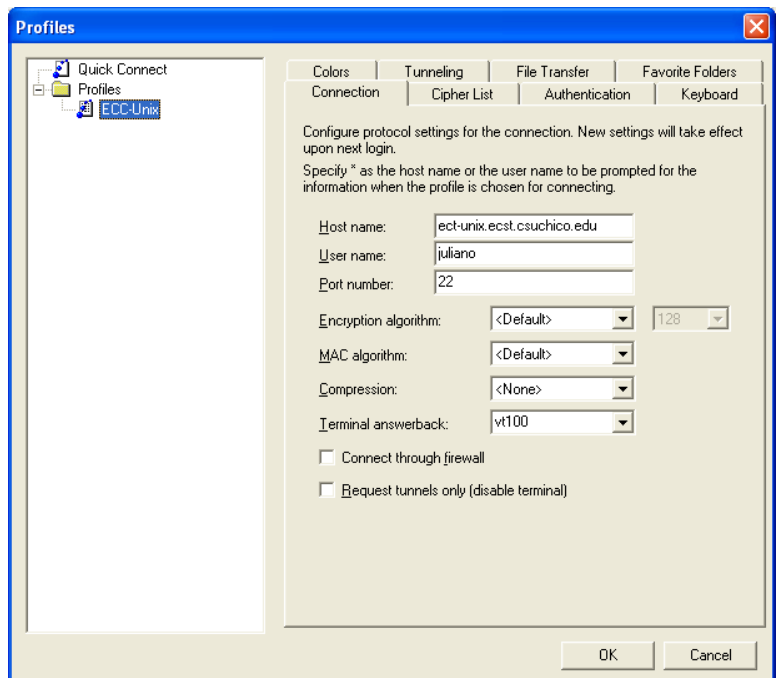
1. Connect to our Unix server by running *SSH Tectia™ Client* or any other SSH client installed on your machine.



2. You can click on Profiles to create and save a profile for connecting to our Unix server. In this example, the created profile is named "ECC-Unix" ...

Click on OK to save this profile ...

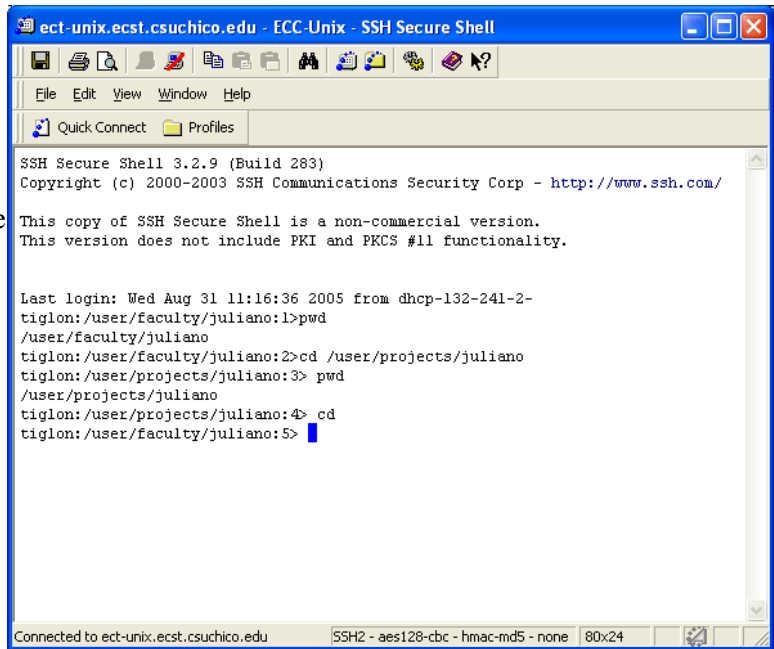
From now on, you just need to click on Profiles then select the profile to use to connect to the appropriate server ...



3. If you successfully establish a connection to the Unix server, you should see a screen that looks similar to this one on the right.

In the sample screen on the right, notice that:

- The command `pwd` is used to display the *present working directory* ...
- The command `cd` is used to change directories to the turn-in directory for this class ... then, the command `pwd` is used to verify that we actually changed to that directory ...
- The command `cd`, without any arguments, brings you back to your home directory ...



4. To create a shortcut named `csci111` from your home directory to your turn-in directory on the Unix server, type the following sequence of commands:

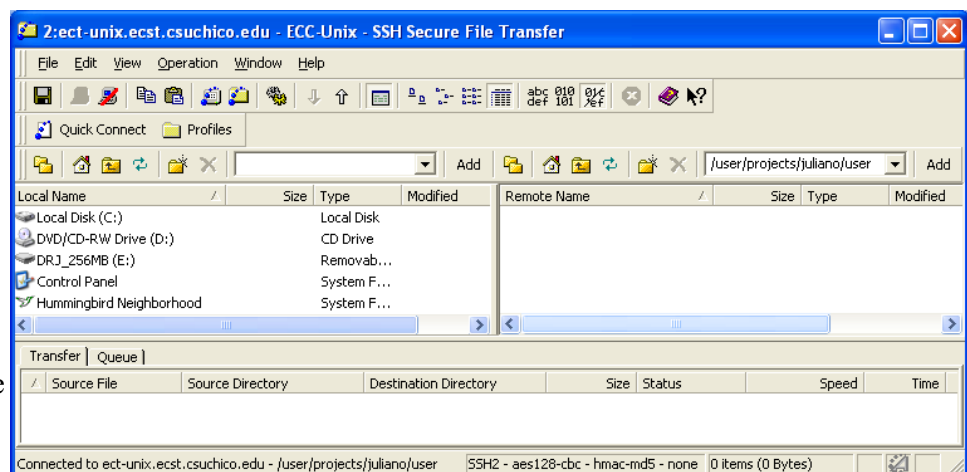
```

cd
ln -s /user/projects/juliano/user csci111
ls -l
cd csci111
pwd

```

The first command guarantees that you are in your home directory. The second command, `ln`, is the *link* command, and the `-s` option specifies creation of a *soft link* (Unix jargon for *shortcut*). In this command, it is assumed that your user name is `user` and you are naming the shortcut as `csci111` (of course, you can use whatever name you want). The third command does a long listing of your directory – at this point, you should see the shortcut `csci111` listed. The fourth and fifth commands verify that the shortcut works. The result of the fifth command should be the path to your home directory with `/csci111` appended to it ...

5. To transfer files from your local machine to the Unix server using secure ftp via *SSH Tectia™ Client*, click the New File Transfer Window button. This action opens a window similar to the one on the right ...



Notice that the window is split into two screens: on the left are files in your local machine, and on the right are files on the (remote) Unix server. You can just click and drag files between these screens to transfer files between your local machine and the remote Unix server ...

You can just click and drag files between these screens to transfer files between your local machine and the remote Unix server ...